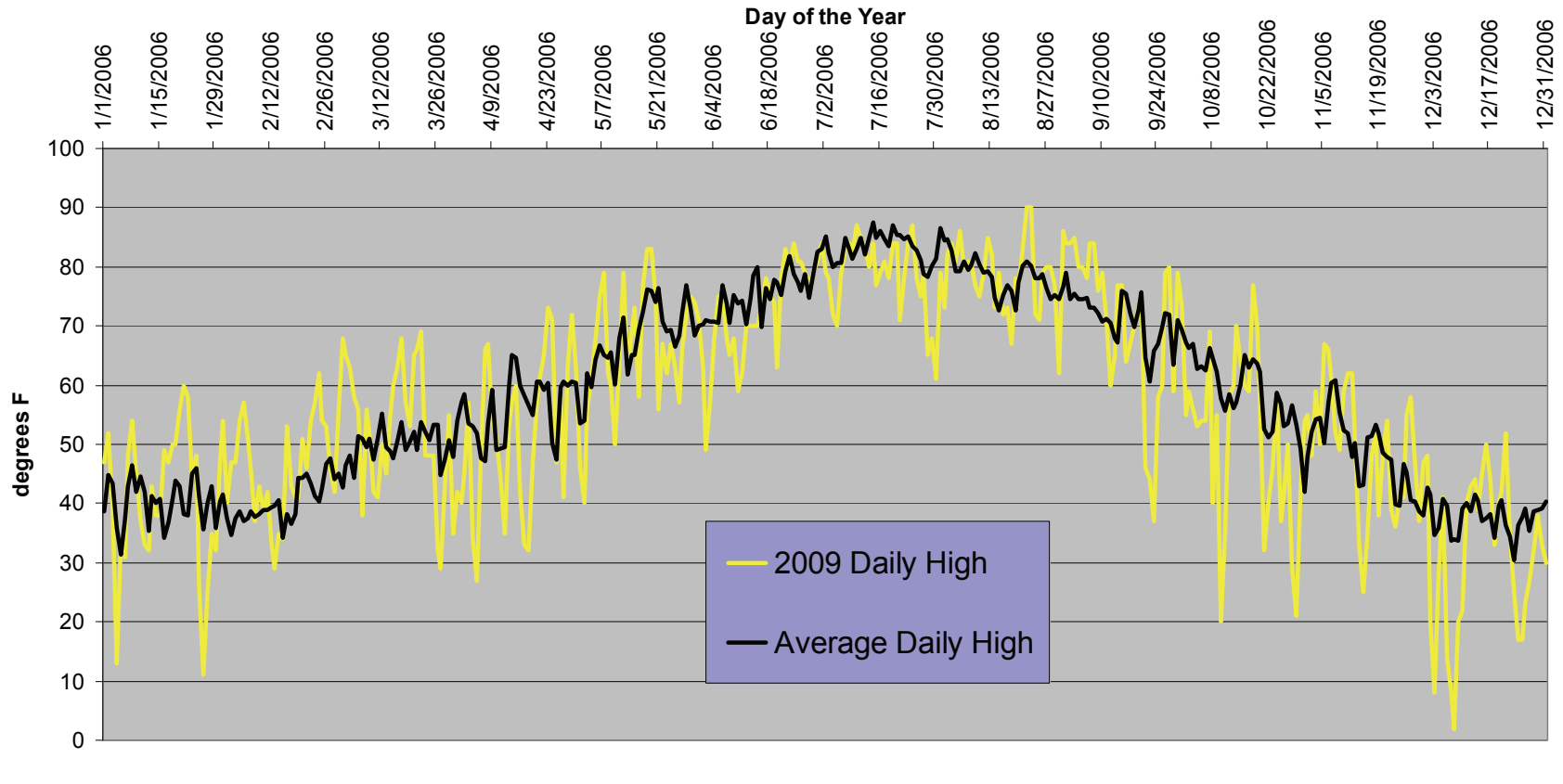


**Bill's 2009 Weather Summary**

	TEMPERATURE				MONTHLY		Y	Y	MONTHLY	MONTHLY G	COOLING	
	AVG MAX	AVG MIN	Y AVG	Y NORMAL	EXTREMES HIGH	EXTREMES LOW	PRECIP	NORMAL PRECIP	SNOWFALL	NORMAL SNOW	DEGREE DAYS	DEGREE DAYS
<b>JAN</b>	41.2	13.4	27.3	26.5	60	-11	0.61	0.88	12.8	16.0	1165	0
<b>FEB</b>	45.6	18.5	32.1	26.9	62	5	0.23	0.70	4.4	12.6	915	0
<b>MAR</b>	52.5	20.2	36.3	35.2	69	2	1.27	1.97	21.0	24.0	886	0
<b>APR</b>	52.1	25.6	38.9	41.7	73	2	5.25	3.48	54.9	32.7	777	0
<b>MAY</b>	66.1	37.6	51.9	51.9	83	28	2.33	1.72	0.0	5.3	402	0
<b>JUN</b>	71.8	43.0	57.4	59.3	84	32	2.93	2.66	0.0	0.1	225	4
<b>JUL</b>	78.6	48.8	63.7	66.9	87	45	4.51	3.08	0.0	0.0	57	25
<b>AUG</b>	78.5	46.2	62.4	63.5	90	37	1.05	3.30	0.0	0.0	102	26
<b>SEP</b>	70.9	39.6	55.3	55.4	85	29	2.24	1.72	1.5	0.8	284	0
<b>OCT</b>	50.8	24.5	37.7	44.0	77	8	2.05	1.66	29.2	15.7	841	0
<b>NOV</b>	49.2	22.6	35.9	34.6	67	-3	1.10	0.73	10.1	11.1	865	0
<b>DEC</b>	31.0	8.0	19.5	24.9	52	-18	0.63	0.11	12.5	18.6	1404	0
<b>ANNUAL SEASON</b>	<b>57.4</b>	<b>29.0</b>	<b>43.2</b>	<b>44.2</b>	<b>90</b>	<b>-18</b>	<b>24.20</b> <b>13.39</b>	23.02 11.92	<b>146.4</b> <b>38.9</b>	136.9 45.7	<b>7923</b> <b>3086</b>	<b>55</b> <b>137</b>

### 2009 High Temperatures vs Normal



### 2009 Low Temperatures vs Normal

